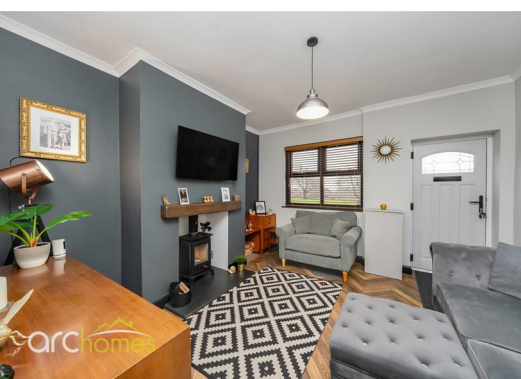




13 Bowling Green Row, Atherton, Lancashire M46 OPR

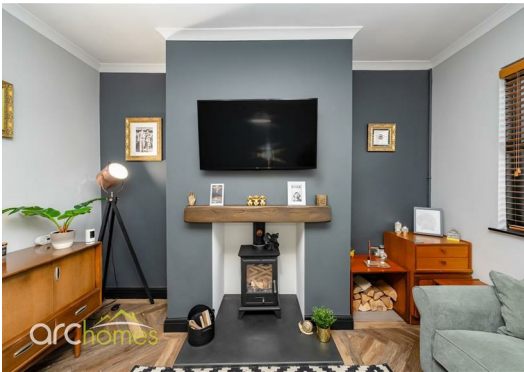
Offers over £160,000

ARC HOMES are delighted to offer FOR SALE this absolutely beautiful two bedroom mews property situated on Bowling Green Row, a gorgeous and picturesque 'off street' location in Howe Bridge. This stunning home is a true credit to the current owner and offers generous accommodation facing a field with open aspect views to the front, and offered with no onward chain. To the front is a well proportioned sitting room whilst to the rear sits the modern kitchen. To the first floor is a double bedroom and a modern bathroom. The generous second bedroom is positioned on the second floor and completes the living accommodation on offer. Outside, this row of terraced properties is positioned within a lovely quiet location facing fields. To the rear is an enclosed low maintenance rear garden. There is land to the side of the properties with space to park vehicles. Council Tax Band A.



Energy Efficiency Rating		
	Current	Potential
Very energy efficient - lower running costs		
(92 plus) A		
(81-91) B		
(69-80) C		
(55-68) D		
(39-54) E		
(21-38) F		
(1-20) G		
Not energy efficient - higher running costs		
England & Wales EU Directive 2002/91/EC 		

Environmental Impact (CO ₂) Rating		
	Current	Potential
Very environmentally friendly - lower CO2 emissions		
(92 plus) A		
(81-91) B		
(69-80) C		
(55-68) D		
(39-54) E		
(21-38) F		
(1-20) G		
Not environmentally friendly - higher CO2 emissions		
England & Wales EU Directive 2002/91/EC 		



30 Bolton Old Road, Atherton, M46 9DL

T. 01942 363599
info@arc-homes.net

